

# THE BIG SMOKE

SCAVENGER HUNT & MAGIC BINGO

# THE BIG SMOKE

## THE MAGICAL PACKAGE

A half day bursting at the seams  
with team building, imagination  
& creativity.

Our award-winning **Scavenger Hunt**  
followed by the mesmerising  
**Magic Bingo Challenge Show**  
hosted by our professional  
magicians!

### FIRST UP:

**Award Winning Scavenger Hunt**

### FOLLOWED BY:

**Magic Bingo Challenge Show**



# THE BIG SMOKE

## WHY CHOOSE A PACKAGE DEAL?

- You will get **up to 10% off** when booking our package
- We **take away the stress** of planning an event so **you have more fun!**
- Saves you & the company both time & money
- It is a **Tailored event** bespoke to you & your company

*The perfect addition to enhance your Away Days,  
conferences or seasonal team celebrations!*

# THE BIG SMOKE

## SCAVENGER HUNT

Our Award-Winning Scavenger Hunt is crafted to be **bespoke & personalised** to your company. We keep it relevant for your team & get them thinking out of the box whilst having a whole lot of fun!





# THE BIG SMOKE

## SCAVENGER HUNT

### How does it work?

**2 hours** to complete **30 challenges**  
**10 items** to find,  
**10 photos** to take  
& **10 videos** to action

---

**3hr Event** in total\*

- briefing, 2 hour hunt,  
awards presentation

**Fully hosted** by The Big Smoke team

**Prize included**

*\*this event can be shortened on request*





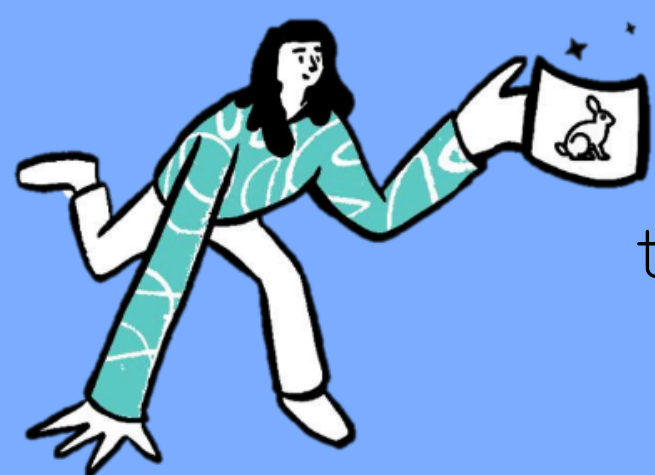
# THE BIG SMOKE

## MAGIC BINGO CHALLENGE SHOW



*An hour of 'How'd-they-do-that's', 'I can't believe it's' and of course, Bingo!*

Our Magic Bingo Challenge Show is **hosted by our professional magicians**; combining **live magic** with our take on bingo & sprinkling of **competitive challenges** making this a truly memorable **3-in-1 event** that will keep you & your colleagues guessing long after the show!





# THE BIG SMOKE

## MAGIC BINGO CHALLENGE SHOW

How does it all work?

1hr hour event

Plenty of **live magic & audience participation**

**Individual bingo cards** for everyone

Match up the **key words** on your bingo card to the corresponding words or objects shown in the **live magic & video clips**.

**Challenges against the clock** throughout

Prizes included



# THE BIG SMOKE

## PRICE

Scavenger Hunt & Magic  
Bingo Challenge Show  
**= £55 pp (+ VAT)**



*(minimum event cost £1550 + VAT  
- applies to all groups 20 or under)*

Discounts available for groups of 100+



# THE BIG SMOKE

## EVENT ADD ONS

### VENUE SOURCING

Wherever you are looking to hold your BSE team building experience we will find you the perfect venue to meet your requirements. Your event will be fully supported by one of our Event Staff.

- Location finding based on your requirements
  - Venue liaison
  - Travel logistics

- Up to 50 people: **£350 (ex vat)**
  - 50 -150 people: **£500**
  - 150 - 300: **£750**
  - 300+ - price on request

### 360 VENUE SUPPORT

This service is designed to fully plan & deliver all your Away Day requirements.

- Location & accommodation finding based on your requirements:

Our BSE staff can source private function facilities, boutique hotels or even a stately home!

- Food and beverage planning
- Itinerary support: We will help you to integrate your work and social time to produce a schedule for your team(s)
  - Travel logistics

- Up to 50 people: **£750 (ex vat)**
  - 50 -100 people: **£1,250**
  - 100+ price on request

*NB: We need a minimum of 6 weeks before your event to action the add ons.*

*Please be aware, if your event falls during our peak times\*, we will need a minimum of 8 weeks before your event.*

*\*Our peak times are June - August & mid-November - end of December*



# THE BIG SMOKE

If you'd like to book our  
Magical Package,  
please contact us on

[ENQUIRIES@THEBIGSMOKEEVENTS.COM](mailto:ENQUIRIES@THEBIGSMOKEEVENTS.COM)

