

# THE BIG SMOKE

WELCOME TO OUR AWARD-WINNING TEAM BUILDING EVENTS

SINCE OUR LAUNCH IN 2015, START-UPS TO GLOBAL BRANDS HAVE ENJOYED OUR UNIQUE TEAM BUILDING EXPERIENCES, ENGAGING THEIR WORKFORCE(S) IN AN INCLUSIVE, FUN AND INTERACTIVE WAY. OUR EVENT MANAGEMENT STAFF ARE HIGHLY SKILLED AND ORGANISED IN DELIVERING SMALL AND LARGE-SCALE EVENTS ACROSS THE UK.



[WWW.THEBIGSMOKEEVENTS.COM](http://WWW.THEBIGSMOKEEVENTS.COM)



# THE BIG SMOKE

WELCOME TO OUR TEAM BUILDING EVENTS:

Choose from our spectacular range of events;



Eyes down and look in with our [Bingo Challenge Show](#)



Challenge your team in The Big Smoke's award-winning [Scavenger Hunt](#)



Pit your wits against your colleagues with our [Bespoke Interactive Quiz](#)

Compete, party and play in [The Ping Pong Challenge Show!](#)



Break the ice but not the tower in [The Giant Jenga Challenge Show](#)



Be beguiled and amazed with our [Magic Bingo](#)



Bet, train, and sabotage horses with our team [Horse Racing Game](#)



Putt 9 holes in the office with [The Crazy Golf Challenge Show](#)



# THE BIG SMOKE

WHAT'S HOT THIS YEAR?



SNAP

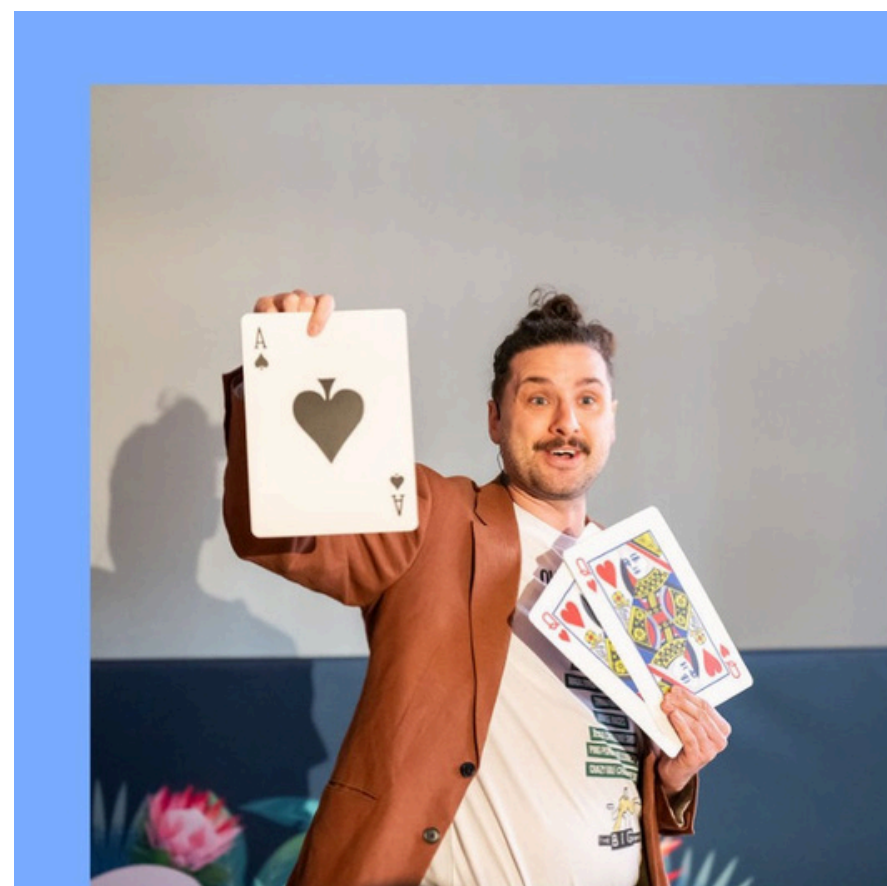


## NO 1: AWARD WINNING SCAVENGER HUNT

SEE PAGE 4 FOR FURTHER DETAILS ON HOW THE HUNT WORKS!

## NO 2. THE MAGIC BINGO CHALLENGE SHOW

SEE PAGE 6 FOR FURTHER DETAILS ON HOW THE SHOW WORKS!



## NO 3: THE GIANT JENGA CHALLENGE SHOW

SEE PAGE 11 FOR FURTHER DETAILS ON HOW THE EVENT WORKS!





**“WE WORKED WITH THE BIG SMOKE TO RUN A SCAVENGER HUNT FOR 400 PEOPLE FOR OUR ANNUAL SUMMIT. THEY ARE HIGHLY SKILLED AT WHAT THEY DO AND I FELT COMPLETELY AT EASE IN THEIR HANDS. THIS EVENT WAS A SMASH HIT! EVERYONE LOVED THE ACTIVITY, ESPECIALLY THE OPPORTUNITY TO MEET PEOPLE OUTSIDE THEIR DAY-TO-DAY TEAMS”**

*- Rebecca (Operations Executive - Dojo)*

**SNAP**



**FIND**



**ACTION**



## SCAVENGER HUNT

This is the **ultimate team building event**. Race against the clock and your colleagues as you compete in small teams to complete **30 challenges**. Solve clues, **find** items, **take** photos, and **action** videos. Finish the day with an **awards screening** of all the best photos and videos from the day.

**Voted 'The BEST Team Day Around' by InStyle magazine** our Scavenger Hunt is a winner for any team.

- Duration - 3 hours
- Hosted live by The Big Smoke Team
- **Personalised challenges** for your company
- **Highlight presentation** of the best content from the day
- **Prizes** for the winning team
- Tailored to your required location
- **Suitable for any group size**



# THE BINGO CHALLENGE SHOW

## BINGO!

The Bingo Challenge Show is a new take on a much-loved game with film, TV and music clips from around the world - with action packed team challenges against the clock!  
Seasonal themes available

- Duration 45 minutes - 1hr
- Hosted live
- Fast paced, fun, inclusive and active!
- Match up the key words on your bingo card to the corresponding words or objects shown in the clips
- Your own branded bingo cards
- Challenge winners get the free square in the card to fast track to Bingo
- Suitable any group size
- Lots of prizes

**“THIS HAS BEEN THE BEST SOCIAL ACTIVITY WE’VE DONE”**

— Gemma (HR Business Partner General Mills)



**“THE ENTERTAINMENT  
WAS EXCELLENT –  
SUCH AN ORIGINAL  
IDEA!”**

*– HAVAS Participant*



**MAGIC**

## **THE MAGIC BINGO CHALLENGE SHOW**

Be beguiled and amazed at **The Magic Bingo Challenge Show**, a totally unique, '**never been seen before**' way to play a universally loved game; through the power of magic! **Hosted live by our professional magicians** and close-up illusionists the show features **60 minutes of pure interactive magical entertainment** for your teams!

- Duration **60 minutes**
- **Hosted live** at a location of your choice
- Match key words/phrases on your bingo card show or heard in the clips and magic tricks
- **Magic themed team challenges** against the clock to win free squares!
- **Live magic throughout** - with grand finale 'wow factor' magic trick!
- Fast paced, fun, inclusive and active!
- **Lots of prizes**
- **Suitable any group size**



# BESPOKE INTERACTIVE QUIZ

Our **Personalised Trivia Quiz** will help your team **connect and get to know each other.**

Have you ever wondered - how many chocolate bars the team eats each week; who has the longest index finger; or how many of the group would take Bear Grylls to a desert island as their luxury item?

- Duration **45 minutes**
- **Hosted live**
- **Personalised to the company & your team**
- **Interactive leaderboard** at the end of each round (5 rounds)
- **Prize included**
- **Suitable any group size**

## Leaderboard

12561 p	
10900 p	
10881 p	
9431 p	Sam
8839 p	Kendy
8260 p	Adam
8217 p	Takayuk
8113 p	Femke
7998 p	Hayley
7821 p	Hannah

**“BIG SMOKE EVENTS DELIVERED THE PERSONALISED TEAM QUIZ FOR MY TEAM OF ABOUT 50 PEOPLE. . EVERYONE HAD A GREAT TIME, AND THE PERSONAL QUESTIONS ADDED TO THE QUIZ SPARKED MANY LIVELY AND MEMORABLE CONVERSATIONS DURING OUR LUNCH AFTERWARDS.**

**IT WAS REALLY GOOD FUN AND HIGHLY RECOMMENDED FOR TEAM BUILDING EVENTS.  
THANK YOU BIG SMOKE EVENTS, YOU REALLY DELIVERED!!!!”**

— Beatriz (EBRD)



**DON'T BE  
AFRAID OF THE DARK...**



## THE CRAZY GOLF CHALLENGE SHOW

It's Crazy Golf...but not as you know it! Hosted live on a fab **9-hole course** set up in your office (s) or location of choice, and featuring **action-packed team challenges** against the clock, **personalised trivia rounds** at each hole and an **awards presentation**. It's a guaranteed hit!

- Duration **60 minutes**
- Brilliant team building experience
- **Hosted live**
- **Easy set up** at a location of your choice
- Awards presentation
- **Suitable for up to 75 people**

**'WE HAVE DONE SEVERAL EVENTS WITH THE BIG SMOKE AND THE FEEDBACK IS ALWAYS POSITIVE! NO MATTER THE TEAM SIZE EVERYTHING ALWAYS RUNS SMOOTHLY. IT'S FUN AND EASY TO PLAY. I WOULD HIGHLY RECOMMEND THEIR EVENTS FOR TEAM BUILDING AND SOCIAL TEAM ACTIVITIES.'**

*- Cliff (Senior Analyst - Netcompany)*



# THE PING PONG CHALLENGE SHOW

Hosted by Ade Leigh from Ping Pong Fight Club, the show features an **action-packed social doubles tournament**, mixed in with some **ping pong trivia, music, pro coaching** and lots of fun challenges.

The teams compete in an all v all round robin tournament with umpires on hand to score and coach. The twist is that teams can answer trivia questions to win a 'Sabotage Card' to help them get the upper hand over their opponents!

- Duration **90 minutes**
- **Hosted live**
- **All equipment provided**
- Team scores are uploaded onto the leaderboard
- **Prizes included**
- **Suitable for 20 - 100 players**

**“GREAT EVENT, EQUIPMENT WAS REALLY HIGH QUALITY AND THE EVENT ITSELF WAS LOTS OF FUN. THE INTERACTIVE ELEMENTS WERE GREAT, AND THE INSTANT SCOREBOARD BROUGHT OUT THE COMPETITIVE SIDE IN US ALL! WOULD HIGHLY RECOMMEND IT.”**

- Jen Jones (National Account Director - RB UK)



**YOU CAN  
DO IT!**

## HORSE RACES

'At the Races' is a **unique game** designed to get teams cheering, placing bets, and training or sabotaging horses with **all the excitement you'd find at a horse racetrack!**

- Duration **60 minutes**
- Hosted by one of The Big Smoke Team
- Groups are briefed together and then split into team to compete and cheer their favourite horses over 6 races courses!
- **Simple, competitive, social**, fun and with lots of strategy thrown in the mix!
- **Suitable for 10-1000 people**

**"FAST PACED AND DEFINITELY BROUGHT OUT PEOPLE'S COMPETITIVE SIDES! THE OVERALL EVENT WAS SEAMLESSLY ORGANISED AND THE TEAM ENCOURAGED EVERYONE TO GET INVOLVED"**

- Sophie Meyrick (Category Controller - L'Oreal)



# THE GIANT JENGA CHALLENGE SHOW

A game to test the steadiest of hands, the most creative of minds & the boldest of team players.

Our Giant Jenga Challenge Show is a refreshing throwback with a twist on the much loved game. Race against the clock, complete the challenges but whatever you do, don't let that tower fall...

- Duration 60 minutes
- Fully hosted by The Big Smoke team
- Working in teams up to 5
- 54 blocks per tower - 3 categories of challenge; The Basic Block, Solo Challenge or The Team Challenge with **personalised challenges** to you & your company
- Points awarded based on block 'difficulty factor'
- Live leaderboard
- Prize included

**'A REALLY FUN WAY TO GET THE TEAM TOGETHER - A GREAT ICEBREAKER FOR THE TEAM AND EVERYONE REALLY GOT INTO THE CHALLENGES'**

- Ross (Director - EY)



# THE BIG SMOKE

## EVENT PRICE GUIDELINES - \*\*EXCLUDING VAT

EVENT	PRICE PER PERSON	MINIMUM EVENT COST	
		PEAK TIME <i>Afternoons (after 12pm) May-Sept &amp; all of Dec</i>	OFF-PEAK TIME <i>Jan-Apr, Mornings (before 12pm) May-Sept, Oct-Nov</i>
SCAVENGER HUNT	£30pp	£750	£600
THE BINGO CHALLENGE SHOW	£25pp	£625	£500
THE MAGIC BINGO CHALLENGE SHOW	£25pp + £450 fixed cost	£1075	£950
BESPOKE INTERACTIVE QUIZ	£25pp	£750	£625
CRAZY GOLF CHALLENGE SHOW	£20pp + £600 fixed cost	£1100	£1000
THE PING PONG CHALLENGE SHOW	£20pp + £300 fixed cost	£800	£700
HORSE RACING	£30pp	£750	£600
THE GIANT JENGA CHALLENGE SHOW	£25pp + £275 fixed cost	£900	£775
*Hybrid and live events may be subject to additional production charges based on client's requirements			



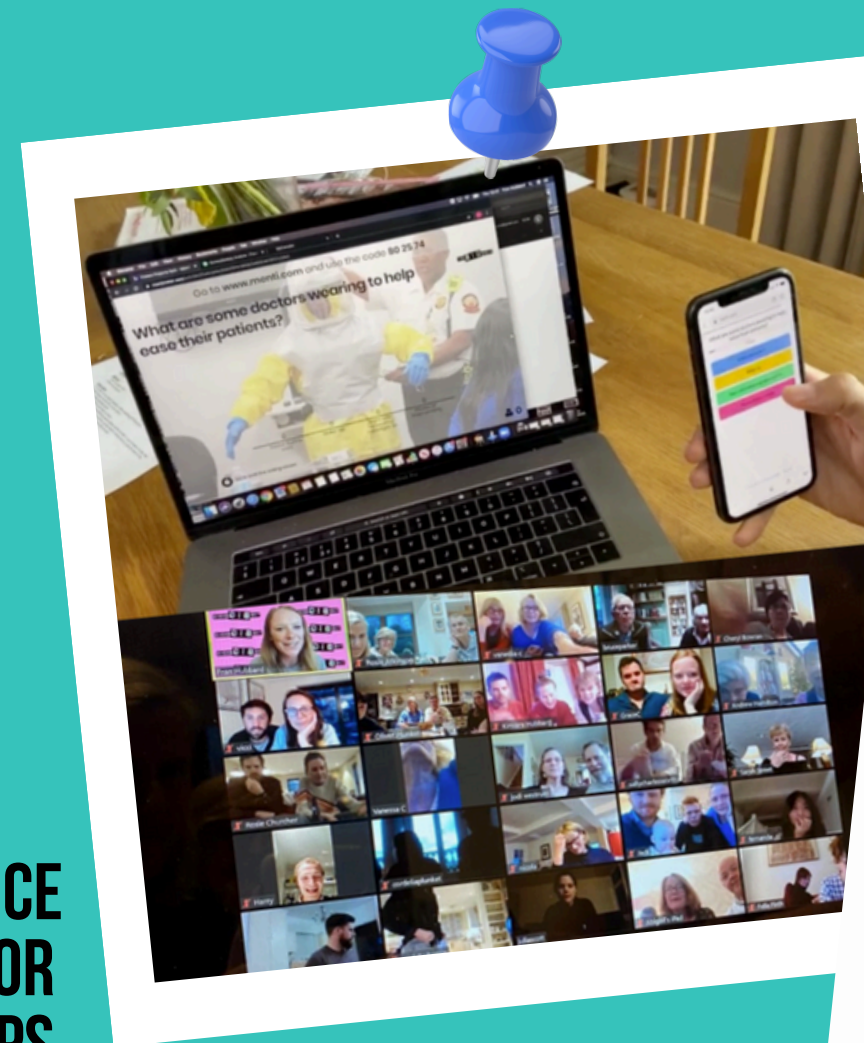
THE BIG SMOKE

# WE ALSO RUN VIRTUAL EVENTS

CLICK HERE FOR OUR  
VIRTUAL EVENTS BROCHURE

**“HIGHLY ENTERTAINING AND INTERACTIVE...A FUN VIRTUAL EXPERIENCE THAT HAS YOU ENJOYING COMEDY CLIPS AND WATCHING/LISTENING FOR CLUES, DRESSING UP AND RAIDING THE KITCHEN CUPBOARDS FOR PROPS AMONGST OTHER UNEXPECTED SHENANIGANS!”**

*Marianne - Company Director*







## HOW TO CHOOSE THE BEST TEAM EVENT (S) FOR YOUR COMPANY

Here are some of our suggestions to programme your team socials;

EVENT	DESCRIPTION
STANDALONE EVENTS	Choose one event and establish its popularity before deciding on widening your employee engagement or trying a new experience
CHOOSE MULTIPLE EVENTS	If your teams enjoy monthly or quarterly socials why not choose a multiple event package for key dates ahead of time
EVENTS PROGRAMMING	If you are looking to integrate various departments in some fun, healthy competition let us program a series of experiences which can be rotated over a period of time
KEY EVENTS	Award nights, rewards, onboarding and leaving parties are all ideally suited to our event structures
CONFERENCES	Talk to us about arranging recreation breakout rooms for your conferences, seminars and expositions
BESPOKE	Organisations are increasingly rotating their workforces between office and remote locations. We can now offer a hybrid event model encompassing both the live and online experience simultaneously, making sure everyone has a brilliant time together
REACHING A GLOBAL AUDIENCE	We have the flexibility to reach a global workforce and broadcast shows to accommodate multiple time zones
Contacts: Francesca Hubbard <a href="mailto:enquiries@thebigsmokeevents.com">enquiries@thebigsmokeevents.com</a> Adrian Leigh <a href="mailto:adrian@thebigsmokeevents.com">adrian@thebigsmokeevents.com</a>	



# THE BIG SMOKE

SUMMER & FESTIVE

QUARTERLY PACKAGE

MONTHLY PACKAGE

PACKAGE	DETAILS	DISCOUNT
SUMMER & FESTIVE	<b>2 events over 12 months</b> Personalised event programming, location finding, professional event advice	<b>10% off the second event</b>
QUARTERLY PACKAGE	<b>4 quarterly events over 12 months</b> Tailored event programming, professional event advice, interchangeable live and virtual events	<b>15% off all events</b>
MONTHLY PACKAGE	<b>12 events over 12 months</b> Tailored event programming, location finding, professional event advice, interchangeable live and virtual events, option to repeat one experience	<b>20% off all events</b>

*\*Minimum of 25 people per event. Please note the above quotations do not include additional production requirements such as room hire charges or travel outside of the greater London area. Terms and conditions apply.*



# THE BIG SMOKE

TRIED & TESTED BY...





THE **B I G** SMOKE

**BOOK YOUR EVENT WITH US!**

ENQUIRIES@THEBIGSMOKEEVENTS.COM

WWW.THEBIGSMOKEEVENTS.COM

@THEBIGSMOKEEVENTS

